



German Research Agenda for the Forest-based Sector

Summary



Paving the way to a knowledge-based bio-economy

The use of renewable forest resources plays a key role in spearheading the way towards sustainable development in our society and economy. The German Research Agenda for the forest-based sector is intended to be a guidepost encouraging industrialists, researchers and

policy-makers to establish a knowledge-based bio-economy geared to growth and sustainability.



Integrated rather than sector-specific research

The German Research Agenda identifies research areas and -themes from a wider perspective going beyond the interests and needs of specific sectors or branches of industry. It is the result of a broad-based,

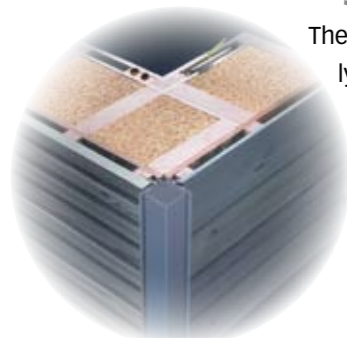
multistage co-operative effort supported by several sector-wide working groups and characterised by a continuous exchange among numerous stakeholders.



Sustainability as an overall approach

The sustainable, environment-friendly and future-proof use of forest-based eco-systems and their resources is the overall goal and benchmark of the German Research Agenda. Innovation

strategies of the forest-based sector focus on three strategic priorities, each of which is subdivided into three research areas.



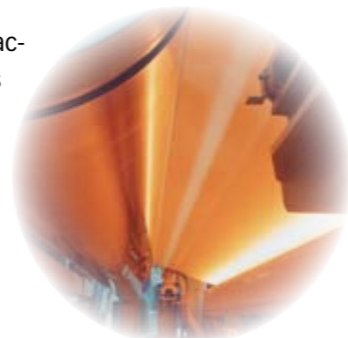
Innovation – a key to success

The German Research Agenda aspires to develop new forms of industry-wide, cross-sector co-operation involving partners from Germany and abroad as well as from other Technology Platforms – for the benefit of our economy, environment and society.

Implementation is aimed primarily at R&D activities and innovation processes spanning several branches of industry. It also encompasses the transfer of research results to industrial practice. German or European funding schemes can generate only some of the resources requi-

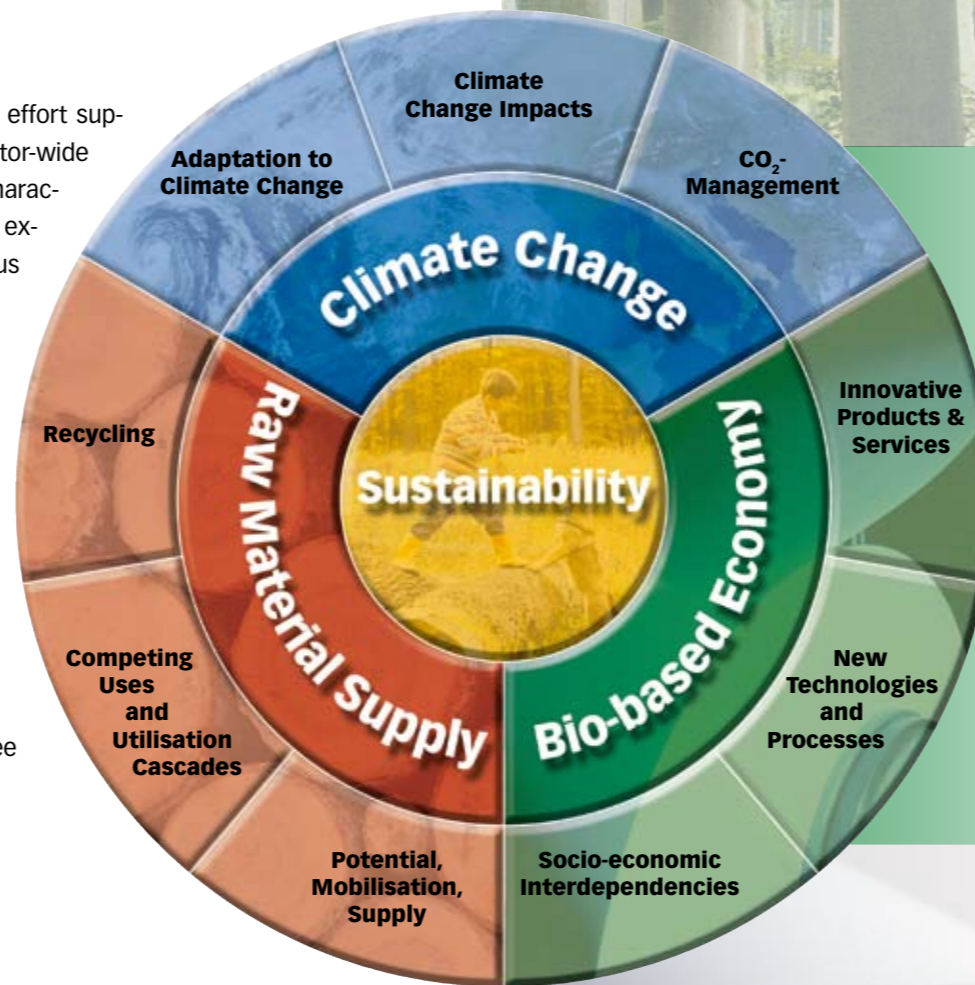
red for implementation. Most measures will depend on corporate commitment and support.

Innovative capacity is a key factor for the economic success of the forest-based sector. Funds and resources spent for research on innovation are investments in the future which are bound to pay.



Climate Change – Mitigation and Adaptation

- Reliable findings about the effects of climate change, and development of suitable protection and conservation concepts
- Flexible and implementation-oriented strategies to adapt to climate change
- Accumulation of greenhouse gases in products and raw materials, and reduction in CO₂ emissions from production processes



Development of a Bio-Based Economy

- Innovative and ecologically sound products & services
- Novel production technologies and -processes based on the efficient use of energy and raw materials
- Socio-economic interactions involved in the development of a bio-based economy

Sustainable Supply of Raw Material

- Mobilisation and use of existing potential in rough timber and used wood as well as used paper products
- Assessment of competing uses and application of practice-oriented solutions
- Efficient use of resources through improved recycling and utilisation cascades

The German Research Agenda makes a significant contribution to defining German and European R&D objectives within the Forest-Based Sector Technology Platform (FTP). It was conceived in a process of constructive dialogue among numerous stakeholders from science and the industry, and was first published in February 2008.

The present abridged version is a summary of the German Research Agenda for the forest-based sector.

The German full-text version is available for downloading or may be ordered as a brochure under www.forestplatform.de

Pictures courtesy of

BAUFRITZ seit 1896

CEI-Bois

Forstliche Versuchs- und Forschungsanstalt

Baden-Württemberg (4)

Holzabsatzfonds

m-real (2)

NASA

Schaffitzel Holzindustrie GmbH + Co

Stora Enso

W. u. J. Derix GmbH & Co

Printing and publication sponsored by



The work of FTP in Germany is funded by the Federal Ministry of Education and Research as a co-operative project under the National Research Programme "Sustainable Forestry".

Project partners: Forest Research Institute of Baden-Württemberg (FVA), German Society for Wood Research (DGfH), Papiertechnische Stiftung (PTS)

www.nachhaltige-waldwirtschaft.de

www.forestplatform.de

SPONSORED BY THE



Federal Ministry
of Education
and Research



Contact

Konstantin von Teuffel
Chairman of the
Steering Committee

Alfons Bieling
Project Manager
Forestry

Martin Fischer
Project Manager
Wood

Werner Förster
Project Manager
Paper

Forest Research Institute of Baden-Württemberg
(FVA)
+49 761 4018-267
alfons.bieling@forst.bwl.de

German Society for Wood Research
(DGfH)
+49 89 516170-19
m.fischer@dgfh.de

Papiertechnische Stiftung
(PTS)
+49 89 12146-250
werner.foerster@ptspaper.de